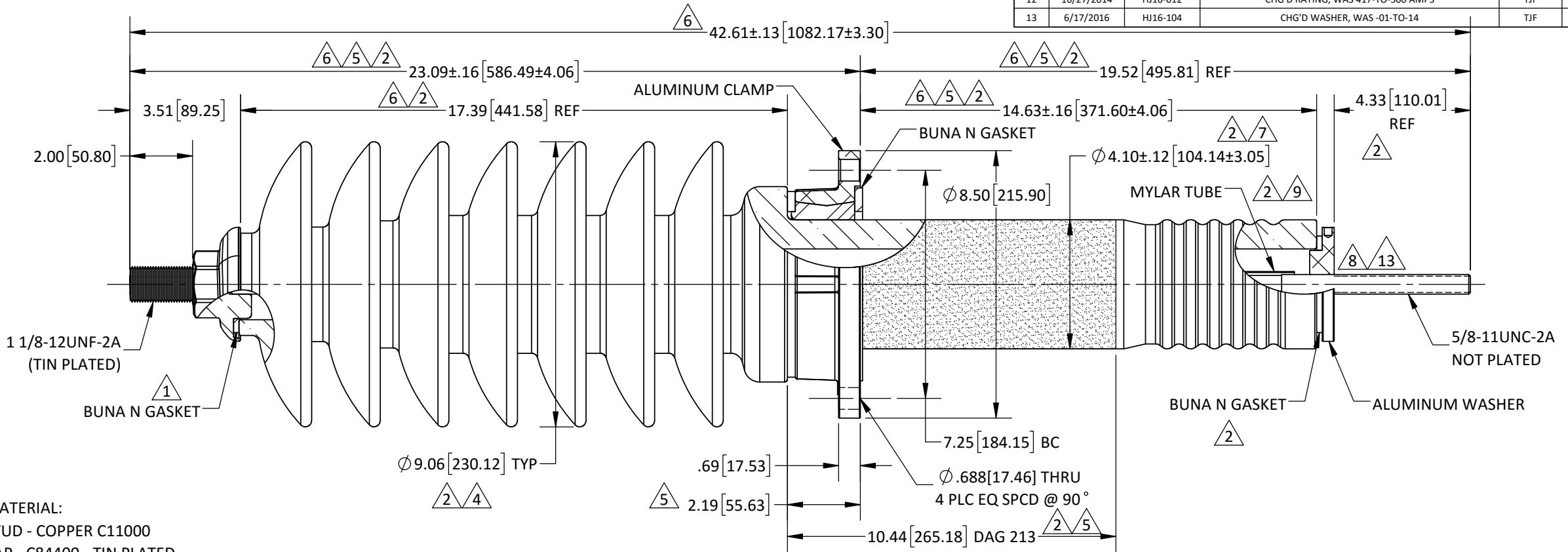


- 10 SPECIFICATIONS:**
- VOLTAGE RATING46kV CLASS
 - BASIC IMPULSE LEVEL 250kV BIL
 - NOMINAL CURRENT RATING500 AMPS
 - CREEP DISTANCE (MINIMUM)42.50[1079.50]
 - STRIKE DISTANCE (MINIMUM)18.75[476.25]
 - APPROXIMATE WEIGHT 65.00 LBS

REVISIONS					
REV.	DATE	ECN #	DESCRIPTION	BY	APP'D
1	11/21/03	HJ03-117	ADDED GASKET NOTE	CJT	SP
2	7/20/04	HJ04-122	PORCELAIN REDWN. ADDED PAPER TUBE & PIPE LUG. REV WASHER. EDITED NOTES. REVISED DIMS & DESCRP	CJT	SP
3	9/20/05	HJ05-076	REM 1/4-18 NPT PLUGS & NOTES	CJT	SP
4	8/15/06	HJ06-062	CHG'D TOP SHED DIMS, WAS $\phi 9.38$ -TO- $\phi 9.06$	CJT	JM
5	10/11/06	HJ06-071	REVISED DIMS	CJT	JM
6	11/7/06	HJ06-050	CAP REDWN. REVISED DIMS	CJT	JM
7	5/05/08	HJ08-100	CHG'D SHANK DIM, WAS $\phi 4.36$ -TO- $\phi 4.10$	CJT	JM
8	8/04/08	HJ08-142	REV WASHER TO REVISION & GASKET CHG	SMM	JFS
9	8/26/08	HJ08-144	REV MYLAR TUBE	SMM	JFS
10	5/06/09	HJ09-017	ADDED MAT'L NOTES & SPECS. EDITED NOTES	JH	JFS
11	1/24/2013	HJ13-012	CHG'D AMP RATING, WAS 307-TO-417	BS	JFS
12	10/27/2014	HJ16-012	CHG'D RATING, WAS 417-TO-500 AMPS	TJF	BLB
13	6/17/2016	HJ16-104	CHG'D WASHER, WAS -01-TO-14	TJF	CJT



- 10 MATERIAL:**
- STUD - COPPER C11000
 - CAP - C84400 - TIN PLATED
 - OIL - TYPE 2 TRANSFORMER OIL

- PORCELAIN NOTES:**
- WET PROCESS ELECTRICAL PORCELAIN.
 - GRAY GLAZE MUNSELL 5BG 7.0/0.4
 - TOLERANCE $\pm 3\%$ WITH NOTHING LESS THAN $\pm .03$ " UNLESS OTHERWISE NOTED ON DRAWING.

PROPRIETARY AND CONFIDENTIAL
 THE INFORMATION CONTAINED IN THIS DRAWING IS THE SOLE PROPERTY OF H-J ENTERPRISES, INC. ANY REPRODUCTION IN PART OR AS A WHOLE WITHOUT THE WRITTEN PERMISSION OF H-J ENTERPRISES, INC. IS PROHIBITED.
 REMOVE ALL BURRS & SHARP EDGES

TOLERANCES
 (EXCEPT AS NOTED)
 ALL DIMENSIONS ARE IN: in/mm

DECIMAL	X = $\pm .1$ XX = $\pm .06$ XXX = $\pm .03$
FRACTIONAL	\pm
ANGULAR	$\pm 1^\circ$



H-J ENTERPRISES, INC.
 3010 HIGH RIDGE BLVD. HIGH RIDGE, MO. 63049 USA
 PHONE 1-636-677-3421 FAX 1-636-376-1915

46kV 250kV BIL OIL FILLED COVER BUSHING

MATERIAL SEE DRAWING

CHK'D SMM APP'D 1/24/13 DRAWING NO. AS1442-001

SCALE N.T.S.

DRAWN BY CJT DATE 7/07/2003